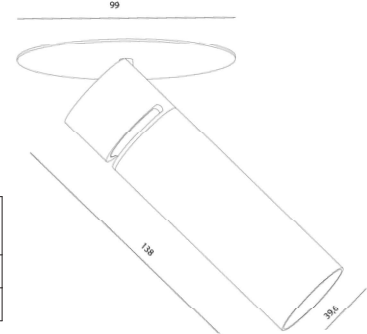
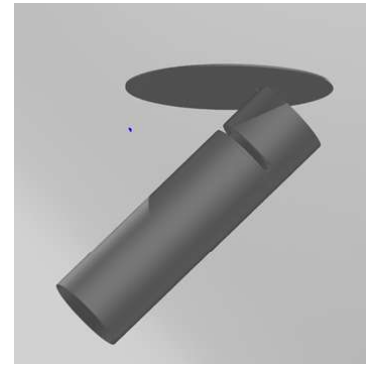


PRODUCT DESCRIPTION

The PLK COUPE is a very small and elegant spot based on the design of the PLK but with a flat end. The tube, with a diameter of about 40mm and a length of 138mm, is 359° rotatable and 80° inclinable. It is asymmetricly placed on a plate with a diameter of 99 mm, available with torsion and flat springs.

Aluminium luminaire. Standard equipped with torsion springs.



TECHNICAL DATA

Application	semi - recessed
Dimensions	cut out: ø80mm h60mm
IP rating	IP20
Power	200mA
Lifetime L70/F10/65°C	>60000h
MacAdam ellipse	3
Guarantee	5 year

(*on components, only if ordered luminaire + driver)

Color Temperature	Wattage	Forward Current	Lumen (LED) (at tp = 65°C)	Lumen/Watt (LED) (at tp = 65°C)	CRI	Energy Label
2700K	6,9W	200mA	840 lm	123 lm/W	90+	E
3000K	6,9W	200mA	895 lm	131 lm/W	90+	E

ORDER REFERENCE

> LUMINAIRE

! ORDER REFERENCE + W (white) / B (black) / G (gold) / T (titanium) / BR (bronze)

2700K 10°	ZUMI1492243005	PLK COUPE S 99 Single 10° SLE G7 6,9W 200mA 840lm 2700K CRI90+ ex.driver
2700K 40°	ZUMI1492241205	PLK COUPE S 99 Single 40° SLE G7 6,9W 200mA 840lm 2700K CRI90+ ex.driver
3000K 10°	ZUMI1492253005	PLK COUPE S 99 Single 10° SLE G7 6,9W 200mA 895lm 3000K CRI90+ ex.driver
3000K 40°	ZUMI1492251205	PLK COUPE S 99 Single 40° SLE G7 6,9W 200mA 895lm 3000K CRI90+ ex.driver

> DRIVER

dimmable (Dali, switchDIM)

TRID28000673 + TRID28001168 + TRID28001104
LCA 10W 150–400mA one4all SC PRE + Strain-relief + Plug 200mA

non dimmable

TRID28000704 + TRID28001168 + TRID28001104
LC 10W 150-400mA flexC SC EXC + Strain-relief + Plug 200mA

> OPTIONS

Flat Springs

ZUMIFS Flat Springs