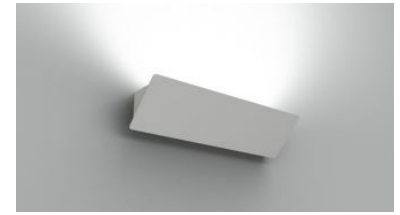
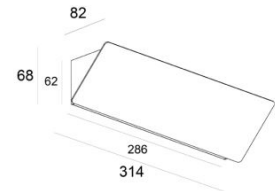


PRODUCT DESCRIPTION

Wall luminaire for indirect lighting. Aluminium profile with a front plate, lacquered in white or black (RAL on request), with opal polycarbonate protection. Available in several color temperatures, standard dimmable.

**TECHNICAL DATA**

Application	wall
Dimensions	314 x 82 x 68mm
IP rating	IP20
Power	230V
Lifetime L70/F10/65°C	>72000h
MacAdam ellipse	3
Guarantee	5 year



Color Temperature	Wattage	Forward Current	Lumen (LED) (at tp = 65°C)	Lumen/Watt (LED) (at tp = 65°C)	CRI	Energy Label
2700K	13,7W	350mA	1620 lm	135 lm/W	90+	D
3000K	13,7W	350mA	1676 lm	137 lm/W	90+	D
4000K	13,7W	350mA	1742 lm	145 lm/W	90+	D

ORDER REFERENCE

> [LUMINAIRE](#)

! ORDER REFERENCE + W (white) / B (black)

2700K	ZUMI061880123	Angle HO Shortie LLE 24 1620lm 350mA 13,7W 2700K CRI90+ incl.driver
3000K	ZUMI061890119	Angle HO Shortie LLE 24 1676lm 350mA 13,7W 3000K CRI90+ incl.driver
4000K	ZUMI061900119	Angle HO Shortie LLE 24 1742lm 350mA 13,7W 4000K CRI90+ incl.driver

> [DRIVER](#)

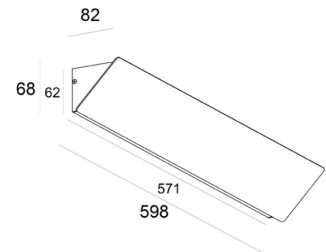
Included, standard dimmable Phase cut/Triac
(Dimmerlist on request)

PRODUCT DESCRIPTION

Wall luminaire for indirect lighting. Aluminium profile with a front plate, lacquered in white or black (RAL on request), with opal polycarbonate protection. Available in several color temperatures.

TECHNICAL DATA

Application	wall
Dimensions	598 x 82 x 68mm
IP rating	IP20
Power	230V
Lifetime L70/F10/65°C	>72000h
MacAdam ellipse	3
Guarantee	5 year



Color Temperature	Wattage	Forward Current	Lumen (LED) (at tp = 65°C)	Lumen/Watt (LED) (at tp = 65°C)	CRI	Energy Label
2700K	21,6W	275mA	2546 lm	136 lm/W	90+	D
3000K	20,6W	400mA	2612 lm	146 lm/W	90+	D
4000K	20,6W	400mA	2740 lm	153 lm/W	90+	D

ORDER REFERENCE

> [LUMINAIRE](#)

! ORDER REFERENCE + (1) **W** (white) / **B** (black)
+ (2) **DD** (for dimmable)

2700K	ZUMI071880123	Angle HO Small LLE 24	2546lm	275mA	21,6W	2700K	CRI90+	incl.driver
3000K	ZUMI071890119	Angle HO Small LLE 24	2612lm	400mA	20,6W	3000K	CRI90+	incl.driver
4000K	ZUMI071900119	Angle HO Small LLE 24	2740lm	400mA	20,6W	4000K	CRI90+	incl.driver

> [DRIVER](#)

Included, if dimmable: DALI, pushDIM.
On request : Dim 1-10V (DA) - Dim Casambi (DC)

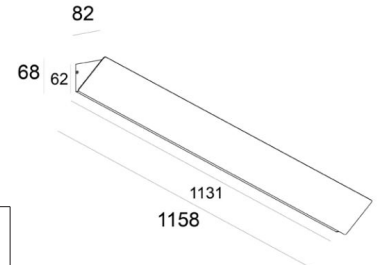
PRODUCT DESCRIPTION

Wall luminaire for indirect lighting. Aluminium profile with a front plate, lacquered in white or black (RAL on request), with opal polycarbonate protection. Available in several color temperatures.



TECHNICAL DATA

Application	wall
Dimensions	1158 x 82 x 68mm
IP rating	IP20
Power	230V
Lifetime L70/F10/65°C	>72000h
MacAdam ellipse	3
Guarantee	5 year



Color Temperature	Wattage	Forward Current	Lumen (LED) (at tp = 65°C)	Lumen/Watt (LED) (at tp = 65°C)	CRI	Energy Label
Uplight						
2700K	43,0W	275mA	5092 lm	136 lm/W	90+	D
3000K	41,2W	400mA	5224 lm	146 lm/W	90+	D
4000K	41,2W	400mA	5480 lm	153 lm/W	90+	D
Reader Set						
2700K	2x 4W	100mA	2x 420 lm	123 lm/W	90+	E
3000K	2x 4W	100mA	2x 447 lm	131 lm/W	90+	E
4000K	2x 4W	100mA	2x 469 lm	137 lm/W	90+	E

ORDER REFERENCE

> LUMINAIRE

! ORDER REFERENCE + (1) **W** (white) / **B** (black)
+ (2) **DD** (for dimmable)

2700K	ZUMI091880123	Angle HO Medium LLE 24 5092lm 275mA 43,0W 2700K CRI90+ incl.driver
3000K	ZUMI091890119	Angle HO Medium LLE 24 5224lm 400mA 41,2W 3000K CRI90+ incl.driver
4000K	ZUMI091900119	Angle HO Medium LLE 24 5469lm 400mA 41,2W 4000K CRI90+ incl.driver

> DRIVER

Included, if dimmable: DALI, pushDIM.

On request : Dim 1-10V (DA) - Dim Casambi (DC) - Emergency kit

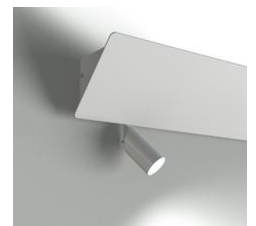
> OPTIONS

- **Reader set** (left + right, non dimmable)

! ORDER REFERENCE + **W** (white) / **B** (black)

2700K	ZUMI212240118	Angle Reader set SLE G7 2x4W 100mA 2x420lm CRI90+ incl.driver
3000K	ZUMI212250118	Angle Reader set SLE G7 2x4W 100mA 2x447lm CRI90+ incl.driver
4000K	ZUMI212280118	Angle Reader set SLE G7 2x4W 100mA 2x469lm CRI90+ incl.driver

On request : **Dim Dali** (DD)

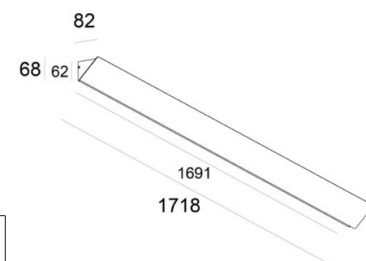


PRODUCT DESCRIPTION

Wall luminaire for indirect lighting. Aluminium profile with a front plate, lacquered in white or black (RAL on request), with opal polycarbonate protection. Available in several color temperatures.

**TECHNICAL DATA**

Application	wall
Dimensions	1718 x 82 x 68mm
IP rating	IP20
Power	230V
Lifetime L70/F10/65°C	>72000h
MacAdam ellipse	3
Guarantee	5 year



Color Temperature	Wattage	Forward Current	Lumen (LED) (at tp = 65°C)	Lumen/Watt (LED) (at tp = 65°C)	CRI	Energy Label
Uplight						
2700K	64,6W	275mA	7638 lm	136 lm/W	90+	D
3000K	61,7W	400mA	7836 lm	146 lm/W	90+	D
4000K	61,7W	400mA	8220 lm	153 lm/W	90+	D
Reader Set						
2700K	2x 4W	100mA	2x 420 lm	123 lm/W	90+	E
3000K	2x 4W	100mA	2x 447 lm	131 lm/W	90+	E
4000K	2x 4W	100mA	2x 469 lm	137 lm/W	90+	E

ORDER REFERENCE

> LUMINAIRE

! ORDER REFERENCE + (1) **W** (white) / **B** (black)
+ (2) **DD** (for dimmable)

2700K	ZUMI201880123	Angle HO Large LLE 24 7638lm 275mA 64,6W 2700K CRI90+ incl.driver
3000K	ZUMI201890119	Angle HO Large LLE 24 7836lm 400mA 61,7W 3000K CRI90+ incl.driver
4000K	ZUMI201900119	Angle HO Large LLE 24 8220lm 400mA 61,7W 4000K CRI90+ incl.driver

> DRIVER

Included, if dimmable: DALI, pushDIM.

On request : Dim 1-10V (DA) - Dim Casambi (DC) - Emergency kit

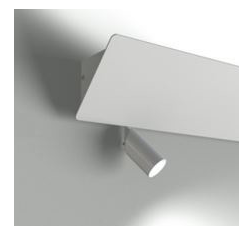
> OPTIONS

- **Reader set** (left + right, non dimmable)

! ORDER REFERENCE + **W** (white) / **B** (black)

2700K	ZUMI212240118	Angle Reader set SLE G7 2x4W 100mA 2x420lm CRI90+ incl.driver
3000K	ZUMI212250118	Angle Reader set SLE G7 2x4W 100mA 2x447lm CRI90+ incl.driver
4000K	ZUMI212280118	Angle Reader set SLE G7 2x4W 100mA 2x469lm CRI90+ incl.driver

On request : **Dim Dali (DD)**



PRODUCT DESCRIPTION

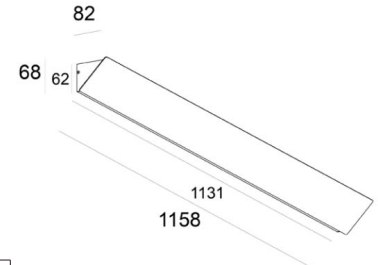
Wall luminaire for indirect lighting. Aluminium profile with a front plate, lacquered in white or black (RAL on request), with opal polycarbonate protection. .

The tunable white version goes from 2700K up to 6500K and is standard dimmable (DALI, switchDIM).



TECHNICAL DATA

Application	wall
Dimensions	1158 x 82 x 68mm
IP rating	IP20
Power	230V
Lifetime L70/B10/65°C	>50000h
MacAdam ellipse	3
Guarantee	5 year



Color Temperature	Wattage	Forward Current	Lumen (LED) (at tp = 65°C)	Lumen/Watt (LED) (at tp = 65°C)	CRI	Energy Label
Uplight						
WW	54W	275mA	6040 lm	130 lm/W	90+	F
CW	54W	275mA	6720 lm	145 lm/W	90+	F
Reader Set						
2700K	2x 4W	100mA	2x 420 lm	123 lm/W	90+	E
3000K	2x 4W	100mA	2x 447 lm	131 lm/W	90+	E
4000K	2x 4W	100mA	2x 469 lm	137 lm/W	90+	E

ORDER REFERENCE

> [LUMINAIRE](#)

! ORDER REFERENCE + W (white) / B (black)

TW ZUMI092320114 Angle TW MediumLLE 24 4X1500lm 927-965 6000lm 275mA 54W incl.driver

> [DRIVER](#)

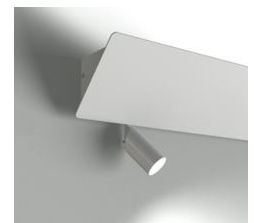
Included, standard dimmable DALI DT8 (only Device Type 8), switchDIM + colourswitch by push button
On request : emergency kit

> [OPTIONS](#)

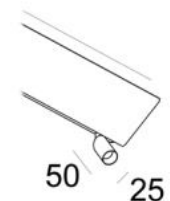
- **Reader set** (left + right, non dimmable)

! ORDER REFERENCE + W (white) / B (black)

2700K	ZUMI212240118	Angle Reader set SLE G7 2x4W 100mA 2x420lm CRI90+ incl.driver
3000K	ZUMI212250118	Angle Reader set SLE G7 2x4W 100mA 2x447lm CRI90+ incl.driver
4000K	ZUMI212280118	Angle Reader set SLE G7 2x4W 100mA 2x469lm CRI90+ incl.driver



On request : **Dim Dali** (DD)



PRODUCT DESCRIPTION

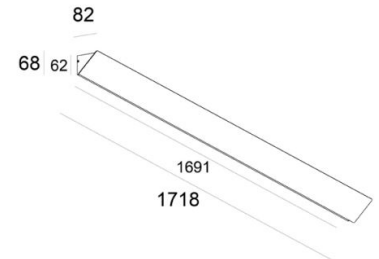
Wall luminaire for indirect lighting. Aluminium profile with a front plate, lacquered in white or black (RAL on request), with opal polycarbonate protection.

The tunable white version goes from 2700K up to 6500K and is standard dimmable (DALI, switchDIM).



TECHNICAL DATA

Application	wall
Dimensions	1718 x 82 x 68mm
IP rating	IP20
Power	230V
Lifetime L70/B10/65°C L70/B10/65°C	>50000h
MacAdam ellipse	3
Guarantee	5 year



Color Temperature	Wattage	Forward Current	Lumen (LED) (at tp = 65°C)	Lumen/Watt (LED) (at tp = 65°C)	CRI	Energy Label
Uplight						
WW	80W	275mA	9060 lm	130 lm/W	90+	F
CW	80W	275mA	10080 lm	145 lm/W	90+	F
Reader Set						
2700K	2x 4W	100mA	2x 420 lm	123 lm/W	90+	E
3000K	2x 4W	100mA	2x 447 lm	131 lm/W	90+	E
4000K	2x 4W	100mA	2x 469 lm	137 lm/W	90+	E

ORDER REFERENCE

> [LUMINAIRE](#)

! ORDER REFERENCE + W (white) / B (black)

TW ZUMI201860114 Angle TW Large LLE 24 6X1500LM 927-965 LV PRE 9000lm 275mA 80W incl.driver

> [DRIVER](#)

Included, standard dimmable DALI DT8 (only Device Type 8), switchDIM + colourswitch by push button
On request : emergency kit

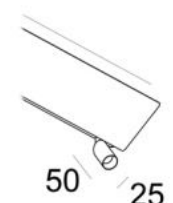
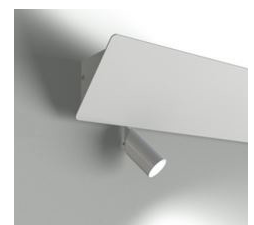
> [OPTIONS](#)

- **Reader set** (left + right, non dimmable)

! ORDER REFERENCE + W (white) / B (black)

2700K	ZUMI212240118	Angle Reader set SLE G7 2x4W 100mA 2x420lm CRI90+ incl.driver
3000K	ZUMI212250118	Angle Reader set SLE G7 2x4W 100mA 2x447lm CRI90+ incl.driver
4000K	ZUMI212280118	Angle Reader set SLE G7 2x4W 100mA 2x469lm CRI90+ incl.driver

On request : **Dim Dali (DD)**



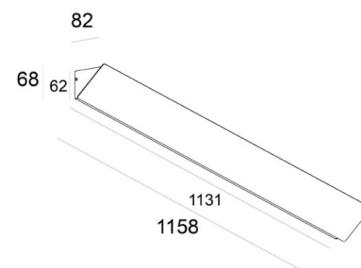
PRODUCT DESCRIPTION

Wall luminaire for indirect lighting. Aluminium profile with a front plate, lacquered in white or black (RAL on request), with opal polycarbonate protection.

The PI-LED-version makes it possible to change color from 1800K to 16000K but also to create all additional RGB-colors. This way any atmosphere can be created.

**TECHNICAL DATA**

Application	wall
Dimensions	1158 x 82 x 68mm
IP rating	IP20
Power	230V
Lifetime L70/B10/65°C	50000h
MacAdam ellipse	1
Guarantee	5 year



Color Temperature	Wattage	Supply Voltage	Lumen (LED) (at tp = 65°C)	Lumen/Watt (LED) (at tp = 65°C)	CRI	Energy Label
Uplight						
1800K-16000K RGB	36,0W	48V	4000 lm	110 lm/W	90+	A+
Reader Set						
2700K	2x 4W	100mA	2x 420 lm	123 lm/W	90+	E
3000K	2x 4W	100mA	2x 447 lm	131 lm/W	90+	E
4000K	2x 4W	100mA	2x 469 lm	137 lm/W	90+	E

ORDER REFERENCE

> [LUMINAIRE](#)

! ORDER REFERENCE + W (white) / B (black)

DALI	ZUMI092660104	Angle PI LED Medium 4000lm 36W 48V CRI90+ incl.driver Dali
ZigBee	ZUMI092670104	Angle PI LED Medium 4000lm 36W 48V CRI90+ incl.driverdim Zigbee

> [DRIVER](#)

Included, dimmable DALI (only Device Type 8) or ZigBee.

> [CONTROLLER](#)

ZigBee	KITEKZWALLY4.1	ZigBee Controller
---------------	----------------	-------------------

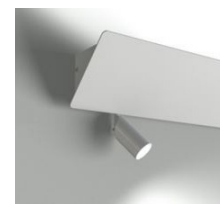
> [OPTIONS](#)

- **Reader set** (left + right, non dimmable)

! ORDER REFERENCE + W (white) / B (black)

2700K	ZUMI212240118	Angle Reader set SLE G7 2x4W 100mA 2x420lm CRI90+ incl.driver
3000K	ZUMI212250118	Angle Reader set SLE G7 2x4W 100mA 2x447lm CRI90+ incl.driver
4000K	ZUMI212280118	Angle Reader set SLE G7 2x4W 100mA 2x469lm CRI90+ incl.driver

On request : **Dim Dali** (DD)



PRODUCT DESCRIPTION

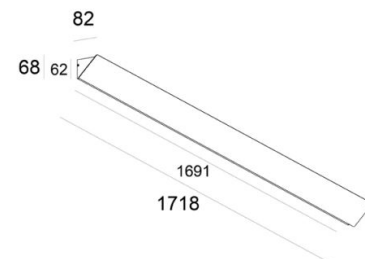
Wall luminaire for indirect lighting. Aluminium profile with a front plate, lacquered in white or black (RAL on request), with opal polycarbonate protection.

The PI-LED-version makes it possible to change color from 1800K to 16000K but also to create all additional RGB-colors. This way any atmosphere can be created.



TECHNICAL DATA

Application	wall
Dimensions	1718 x 82 x 68mm
IP rating	IP20
Power	230V
Lifetime L70/B10/65°C	50000h
MacAdam ellipse	3
Guarantee	5 year



Color Temperature	Wattage	Supply Voltage	Lumen (LED) (at tp = 65°C)	Lumen/Watt (LED) (at tp = 65°C)	CRI	Energy Label
Uplight						
1800K-16000K RGB	54W	48V	6000 lm	110 lm/W	90+	A+
Reader Set						
2700K	2x 4W	100mA	2x 420 lm	123 lm/W	90+	E
3000K	2x 4W	100mA	2x 447 lm	131 lm/W	90+	E
4000K	2x 4W	100mA	2x 469 lm	137 lm/W	90+	E

ORDER REFERENCE

> LUMINAIRE

! ORDER REFERENCE + W (white) / B (black)

DALI	ZUMI202680104	Angle PI-LED Large 54W 48V 6000 lm CRI90+ incl.driver dim DALI
ZigBee	ZUMI202690104	Angle PI-LED Large 54W 48V 6000 lm CRI90+ incl.driver dim ZigBee

> DRIVER

Included, dimmable DALI (only Device Type 8) or ZigBee.

> CONTROLLER

ZigBee	KITEKZWALLY4.1	ZigBee Controller
---------------	----------------	-------------------

> OPTIONS

- **Reader set** (left + right, non dimmable)

! ORDER REFERENCE + W (white) / B (black)

2700K	ZUMI212240118	Angle Reader set SLE G7 2x4W 100mA 2x420lm CRI90+ incl.driver
3000K	ZUMI212250118	Angle Reader set SLE G7 2x4W 100mA 2x447lm CRI90+ incl.driver
4000K	ZUMI212280118	Angle Reader set SLE G7 2x4W 100mA 2x469lm CRI90+ incl.driver

On request : **Dim Dali (DD)**

