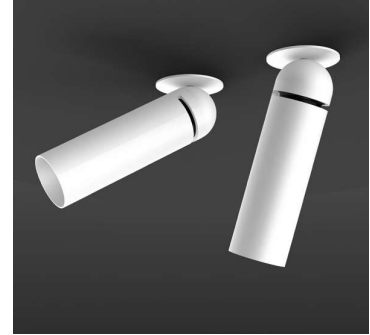


PRODUCT DESCRIPTION

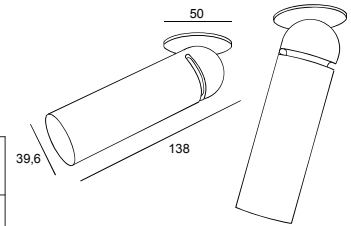
The PLK is a very small and elegant spot with multiple possibilities. The tube, with a diameter of about 40mm and a length of 138mm, is 359° rotatable and 80° inclinable. It is placed on a small plate with a diameter of 50 mm, only available with torsion springs.

Aluminium luminaire.

**TECHNICAL DATA**

Application	semi recessed
Dimensions	cut out: \varnothing 40mm h60mm
IP rating	IP20
Power	200mA
Lifetime L70/F10/65°C	>60000h
MacAdam ellipse	3
Guarantee	5 year

(*on components, only if ordered luminaire + driver)



Color Temperature	Wattage	Forward Current	Lumen (LED) (at $t_p = 65^\circ\text{C}$)	Lumen/Watt (LED) (at $t_p = 65^\circ\text{C}$)	CRI	Energy Label
2700K	6,9W	200mA	840 lm	123 lm/W	90+	E
3000K	6,9W	200mA	895 lm	131 lm/W	90+	E

ORDER REFERENCE

> LUMINAIRE

! ORDER REFERENCE + W (white) / B (black) / G (gold) / T (titanium) / BR (bronze)

2700K 10°	ZUMI422243005	PLK S 50 10° SLE G7 6,9W 200mA 840lm 2700K CRI90+ ex.driver
2700K 40°	ZUMI422241205	PLK S 50 40° SLE G7 6,9W 200mA 840lm 2700K CRI90+ ex.driver
3000K 10°	ZUMI422253005	PLK S 50 10° SLE G7 6,9W 200mA 895lm 3000K CRI90+ ex.driver
3000K 40°	ZUMI422251205	PLK S 50 40° SLE G7 6,9W 200mA 895lm 3000K CRI90+ ex.driver

> DRIVER (to be placed remotely)