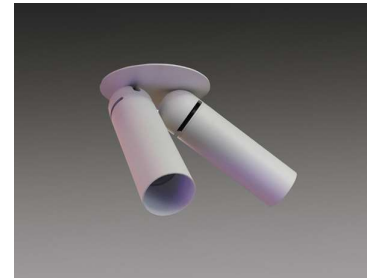


PRODUCT DESCRIPTION

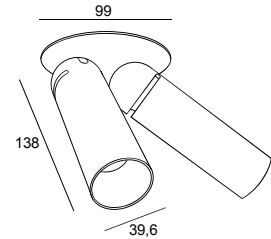
The PLK is a very small and elegant spot with multiple possibilities. The tube, with a diameter of about 40mm and a length of 138mm, is 359° rotatable and 80° inclinable. Two tubes are placed on a plate with a diameter of 99 mm, available with torsion and flat springs.

Aluminium luminaire. Standard equipped with torsion springs.



TECHNICAL DATA

Application semi - recessed
 Dimensions cut out: ø80mm h60mm
 IP rating IP20
 Power 200mA
 Lifetime L70/F10/65°C >60000h
 MacAdam ellipse 3
 Guarantee 5 year
 (*on components, only if ordered luminaire + driver)



Color Temperature	Wattage	Forward Current	Lumen (LED) (at tp = 65°C)	Lumen/Watt (LED) (at tp = 65°C)	CRI	Energy Label
2700K	6,9W	200mA	840 lm	123 lm/W	90+	E
3000K	6,9W	200mA	895 lm	131 lm/W	90+	E

ORDER REFERENCE

> LUMINAIRE

! ORDER REFERENCE + W (white) / B (black) / G (gold) / T (titanium) / BR (bronze)

2700K 10°	ZUMI442243005	PLK S 99 Double 10° SLE G7 2x6,9W 200mA 2x840lm 2700K CRI90+ ex.driver
2700K 40°	ZUMI442241205	PLK S 99 Double 40° SLE G7 2x6,9W 200mA 2x840lm 2700K CRI90+ ex.driver
3000K 10°	ZUMI442253005	PLK S 99 Double 10° SLE G7 2x6,9W 200mA 2x895lm 3000K CRI90+ ex.driver
3000K 40°	ZUMI442251205	PLK S 99 Double 40° SLE G7 2x6,9W 200mA 2x895lm 3000K CRI90+ ex.driver

> DRIVER (parallel connection)

dimmable (Dali, switchDIM)

TRID28000674 + TRID28001168 + TRID28001112
 LCA 17W 250-700mA one4all SC PRE + Strain-relief + Plug 400mA

non dimmable

TRID28000705 + TRID28001168 + TRID28001112
 LC 17W 250-700mA flexC SC EXC + Strain-relief + Plug 400mA

> OPTIONS

Flat Springs

ZUMIFS Flat Springs