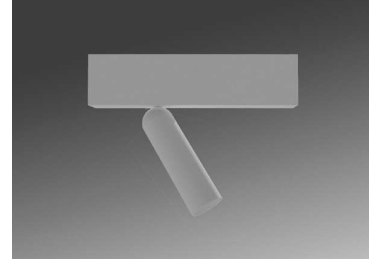


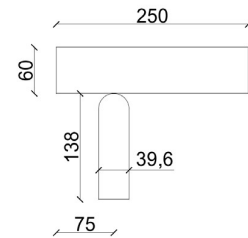
**PRODUCT DESCRIPTION**

The PLK is a very small and elegant spot with multiple possibilities. The tube, with a diameter of about 40mm and a length of 138mm, is 359° rotatable and 80° inclinable. It is placed on a base with the driver included which makes it easy to install. There are several standard possibilities, specials are on request.

Aluminium luminaire.

**TECHNICAL DATA**

Application	surface
Dimensions	base: 250 x 60 x 40mm
IP rating	IP20
Power	230V
Lifetime L70/F10/65°C	>60000h
MacAdam ellipse	3
Guarantee	5 year



Color Temperature	Wattage	Forward Current	Lumen (LED) (at tp = 65°C)	Lumen/Watt (LED) (at tp = 65°C)	CRI	Energy Label
2700K	8,3W	200mA	864 lm	121 lm/W	90+	E
3000K	8,3W	200mA	930 lm	130 lm/W	90+	E

**ORDER REFERENCE**

> [LUMINAIRE](#)

**! ORDER REFERENCE + W (white) / B (black) / G (gold) / T (titanium) / BR (bronze)**

<b>2700K</b>	ZUMI482241205	PLK BASE 250/1 SLE G7 8,3W 864lm 2700K CRI90+ incl.driver
<b>3000K</b>	ZUMI482251205	PLK BASE 250/1 SLE G7 8,3W 930lm 3000K CRI90+ incl.driver

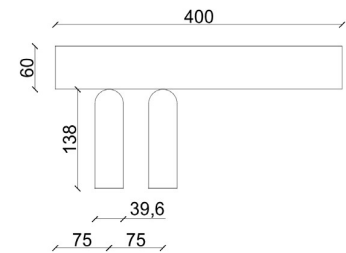
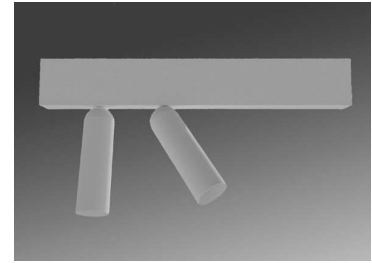
> [DRIVER](#)

Included, standard dimmable phase cut.

**PRODUCT DESCRIPTION**

The PLK is a very small and elegant spot with multiple possibilities. The tube, with a diameter of about 40mm and a length of 138mm, is 359° rotatable and 80° inclinable. It is placed on a base with the driver included which makes it easy to install. There are several standard possibilities, specials are on request.

Aluminium luminaire.

**TECHNICAL DATA**

Application	surface
Dimensions	base: 400 x 60 x 40mm
IP rating	IP20
Power	230V
Lifetime L70/F10/65°C	>60000h
MacAdam ellipse	3
Guarantee	5 year

Color Temperature	Wattage	Forward Current	Lumen (LED) (at tp = 65°C)	Lumen/Watt (LED) (at tp = 65°C)	CRI	Energy Label
2700K	2x8,3W	200mA	2x864 lm	121 lm/W	90+	E
3000K	2x8,3W	200mA	2x930 lm	130 lm/W	90+	E

**ORDER REFERENCE**

> [LUMINAIRE](#)

**! ORDER REFERENCE** + (1) **W** (white) / **B** (black) / **G** (gold) / **T** (titanium) / **BR** (bronze)  
+ (2) **DD** (for dimmable)

<b>2700K</b>	ZUMI492241205	PLK BASE 400/2 SLE G7 2x8,3W 2x864lm 2700K CRI90+ incl.driver
<b>3000K</b>	ZUMI492251205	PLK BASE 400/2 SLE G7 2x8,3W 2x930lm 3000K CRI90+ incl.driver

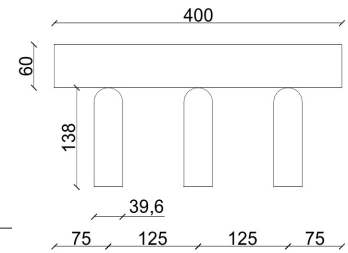
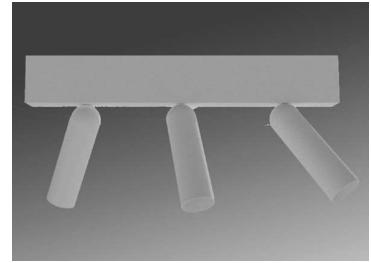
> [DRIVER](#)

Included, if dimmable: DALI, pushDIM

**PRODUCT DESCRIPTION**

The PLK is a very small and elegant spot with multiple possibilities. The tube, with a diameter of about 40mm and a length of 138mm, is 359° rotatable and 80° inclinable. It is placed on a base with the driver included which makes it easy to install. There are several standard possibilities, specials are on request.

Aluminium luminaire.

**TECHNICAL DATA**

Application	surface
Dimensions	base: 400 x 60 x 40mm
IP rating	IP20
Power	230V
Lifetime L70/F10/65°C	>60000h
MacAdam ellipse	3
Guarantee	5 year

Color Temperature	Wattage	Forward Current	Lumen (LED) (at tp = 65°C)	Lumen/Watt (LED) (at tp = 65°C)	CRI	Energy Label
2700K	3x8,3W	200mA	3x864 lm	121 lm/W	90+	E
3000K	3x8,3W	200mA	3x930 lm	130 lm/W	90+	E

**ORDER REFERENCE**

> [LUMINAIRE](#)

**! ORDER REFERENCE** + (1) **W** (white) / **B** (black) / **G** (gold) / **T** (titanium) / **BR** (bronze)  
+ (2) **DD** (for dimmable)

**2700K** ZUMI502241205 PLK BASE 400/3 SLE G7 3x8,3W 3x864lm 2700K CRI90+ incl.driver  
**3000K** ZUMI502251205 PLK BASE 400/3 SLE G7 3x8,3W 3x930lm 3000K CRI90+ incl.driver

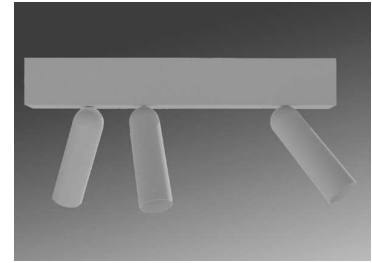
> [DRIVER](#)

Included, if dimmable: DALI, pushDIM

**PRODUCT DESCRIPTION**

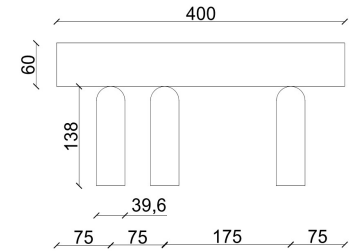
The PLK is a very small and elegant spot with multiple possibilities. The tube, with a diameter of about 40mm and a length of 138mm, is 359° rotatable and 80° inclinable. It is placed on a base with the driver included which makes it easy to install. There are several standard possibilities, specials are on request.

Aluminium luminaire.



**TECHNICAL DATA**

Application	surface
Dimensions	base: 400 x 60 x 40mm
IP rating	IP20
Power	230V
Lifetime L70/F10/65°C	>60000h
MacAdam ellipse	3
Guarantee	5 year



Color Temperature	Wattage	Forward Current	Lumen (LED) (at tp = 65°C)	Lumen/Watt (LED) (at tp = 65°C)	CRI	Energy Label
2700K	3x8,3W	200mA	3x864 lm	121 lm/W	90+	E
3000K	3x8,3W	200mA	3x930 lm	130 lm/W	90+	E

**ORDER REFERENCE**

> LUMINAIRE

**! ORDER REFERENCE** + (1) **W** (white) / **B** (black) / **G** (gold) / **T** (titanium) / **BR** (bronze)  
 + (2) **DD** (for dimmable)

<b>2700K</b>	ZUMI512241205	PLK BASE 400/3 asym. SLE G7 3x8,3W 3x864lm 2700K CRI90+ incl.driver
<b>3000K</b>	ZUMI512251205	PLK BASE 400/3 asym. SLE G7 3x8,3W 3x930lm 3000K CRI90+ incl.driver

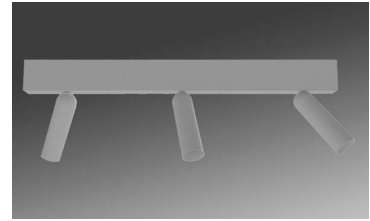
> DRIVER

Included, if dimmable: DALI, pushDIM

**PRODUCT DESCRIPTION**

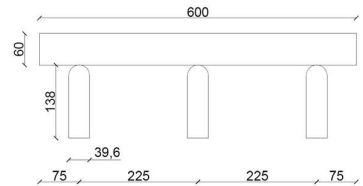
The PLK is a very small and elegant spot with multiple possibilities. The tube, with a diameter of about 40mm and a length of 138mm, is 359° rotatable and 80° inclinable. It is placed on a base with the driver included which makes it easy to install. There are several standard possibilities, specials are on request.

Aluminium luminaire.



**TECHNICAL DATA**

Application	surface
Dimensions	base: 600 x 60 x 40mm
IP rating	IP20
Power	230V
Lifetime L70/F10/65°C	>60000h
MacAdam ellipse	3
Guarantee	5 year



Color Temperature	Wattage	Forward Current	Lumen (LED) (at tp = 65°C)	Lumen/Watt (LED) (at tp = 65°C)	CRI	Energy Label
2700K	3x8,3W	200mA	3x864 lm	121 lm/W	90+	E
3000K	3x8,3W	200mA	3x930 lm	130 lm/W	90+	E

**ORDER REFERENCE**

> LUMINAIRE

**! ORDER REFERENCE** + (1) **W** (white) / **B** (black) / **G** (gold) / **T** (titanium) / **BR** (bronze)  
 + (2) **DD** (for dimmable)

<b>2700K</b>	ZUMI522241205	PLK BASE 600/3 SLE G7 3x8,3W 3x864lm 2700K CRI90+ incl.driver
<b>3000K</b>	ZUMI522251205	PLK BASE 600/3 SLE G7 3x8,3W 3x930lm 3000K CRI90+ incl.driver

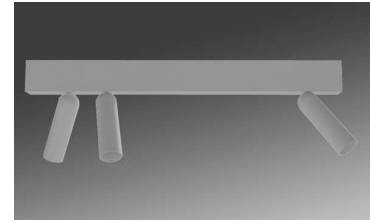
> DRIVER

Included, if dimmable: DALI, pushDIM

**PRODUCT DESCRIPTION**

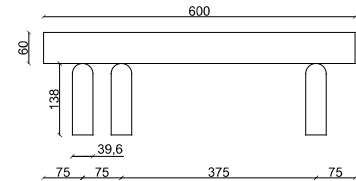
The PLK is a very small and elegant spot with multiple possibilities. The tube, with a diameter of about 40mm and a length of 138mm, is 359° rotatable and 80° inclinable. It is placed on a base with the driver included which makes it easy to install. There are several standard possibilities, specials are on request.

Aluminium luminaire.



**TECHNICAL DATA**

Application	surface
Dimensions	base: 600 x 60 x 40mm
IP rating	IP20
Power	230V
Lifetime L70/F10/65°C	>60000h
MacAdam ellipse	3
Guarantee	5 year



Color Temperature	Wattage	Forward Current	Lumen (LED) (at tp = 65°C)	Lumen/Watt (LED) (at tp = 65°C)	CRI	Energy Label
2700K	3x8,3W	200mA	3x864 lm	121 lm/W	90+	E
3000K	3x8,3W	200mA	3x930 lm	130 lm/W	90+	E

**ORDER REFERENCE**

> LUMINAIRE

**! ORDER REFERENCE** + (1) **W** (white) / **B** (black) / **G** (gold) / **T** (titanium) / **BR** (bronze)  
 + (2) **DD** (for dimmable)

<b>2700K</b>	ZUMI532241205	PLK BASE 600/3 asym. SLE G7 3x8,3W 3x864lm 2700K CRI90+ incl.driver
<b>3000K</b>	ZUMI532251205	PLK BASE 600/3 asym. SLE G7 3x8,3W 3x930lm 3000K CRI90+ incl.driver

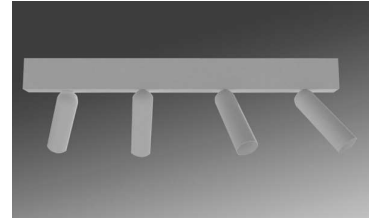
> DRIVER

Included, if dimmable: DALI, pushDIM

**PRODUCT DESCRIPTION**

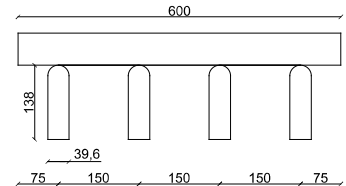
The PLK is a very small and elegant spot with multiple possibilities. The tube, with a diameter of about 40mm and a length of 138mm, is 359° rotatable and 80° inclinable. It is placed on a base with the driver included which makes it easy to install. There are several standard possibilities, specials are on request.

Aluminium luminaire.



**TECHNICAL DATA**

Application	surface
Dimensions	base: 600 x 60 x 40mm
IP rating	IP20
Power	230V
Lifetime L70/F10/65°C	>60000h
MacAdam ellipse	3
Guarantee	5 year



Color Temperature	Wattage	Forward Current	Lumen (LED) (at tp = 65°C)	Lumen/Watt (LED) (at tp = 65°C)	CRI	Energy Label
2700K	4x8,3W	200mA	4x864 lm	121 lm/W	90+	E
3000K	4x8,3W	200mA	4x930 lm	130 lm/W	90+	E

**ORDER REFERENCE**

> LUMINAIRE

**! ORDER REFERENCE** + (1) **W** (white) / **B** (black) / **G** (gold) / **T** (titanium) / **BR** (bronze)  
 + (2) **DD** (for dimmable)

<b>2700K</b>	ZUMI542241205	PLK BASE 600/4 SLE G7 4x8,3W 4x864lm 2700K CRI90+ incl.driver
<b>3000K</b>	ZUMI542251205	PLK BASE 600/4 SLE G7 4x8,3W 4x930lm 3000K CRI90+ incl.driver

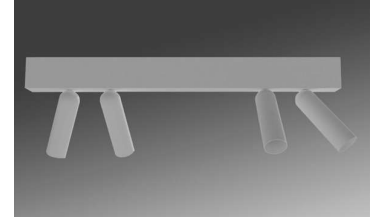
> DRIVER

Included, if dimmable: DALI, pushDIM

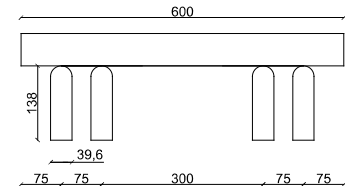
**PRODUCT DESCRIPTION**

The PLK is a very small and elegant spot with multiple possibilities. The tube, with a diameter of about 40mm and a length of 138mm, is 359° rotatable and 80° inclinable. It is placed on a base with the driver included which makes it easy to install. There are several standard possibilities, specials are on request.

Aluminium luminaire.

**TECHNICAL DATA**

Application	surface
Dimensions	base: 600 x 60 x 40mm
IP rating	IP20
Power	230V
Lifetime L70/F10/65°C	>60000h
MacAdam ellipse	3
Guarantee	5 year



Color Temperature	Wattage	Forward Current	Lumen (LED) (at tp = 65°C)	Lumen/Watt (LED) (at tp = 65°C)	CRI	Energy Label
2700K	4x8,3W	200mA	4x864 lm	121 lm/W	90+	E
3000K	4x8,3W	200mA	4x930 lm	130 lm/W	90+	E

**ORDER REFERENCE**

> [LUMINAIRE](#)

**! ORDER REFERENCE** + (1) **W** (white) / **B** (black) / **G** (gold) / **T** (titanium) / **BR** (bronze) +  
 +(2) **DD** (for dimmable)

**2700K** ZUMI552241205 PLK BASE 600/4 asym. SLE G7 4x8,3W 4x864lm 2700K CRI90+ incl.driver  
**3000K** ZUMI552251205 PLK BASE 600/4 asym. SLE G7 4x8,3W 4x930lm 3000K CRI90+ incl.driver

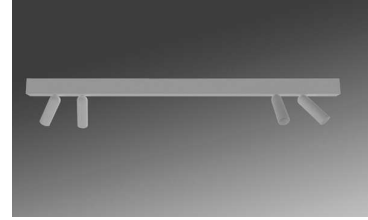
> [DRIVER](#)

Included, if dimmable: DALI, pushDIM

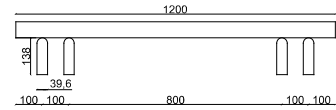
**PRODUCT DESCRIPTION**

The PLK is a very small and elegant spot with multiple possibilities. The tube, with a diameter of about 40mm and a length of 138mm, is 359° rotatable and 80° inclinable. It is placed on a base with the driver included which makes it easy to install. There are several standard possibilities, specials are on request.

Aluminium luminaire.

**TECHNICAL DATA**

Application	surface
Dimensions	base: 1200 x 60 x 40mm
IP rating	IP20
Power	230V
Lifetime L70/F10/65°C	>60000h
MacAdam ellipse	3
Guarantee	5 year



Color Temperature	Wattage	Forward Current	Lumen (LED) (at tp = 65°C)	Lumen/Watt (LED) (at tp = 65°C)	CRI	Energy Label
2700K	4x8,3W	200mA	4x864 lm	121 lm/W	90+	E
3000K	4x8,3W	200mA	4x930 lm	130 lm/W	90+	E

**ORDER REFERENCE**

> [LUMINAIRE](#)

**! ORDER REFERENCE** + (1) **W** (white) / **B** (black) / **G** (gold) / **T** (titanium) / **BR** (bronze)  
+ (2) **DD** (for dimmable)

<b>2700K</b>	ZUMI562241205	PLK BASE 1200/4 SLE G7 4x8,3W 4x864lm 2700K CRI90+ incl.driver
<b>3000K</b>	ZUMI562251205	PLK BASE 1200/4 SLE G7 4x8,3W 4x930lm 3000K CRI90+ incl.driver

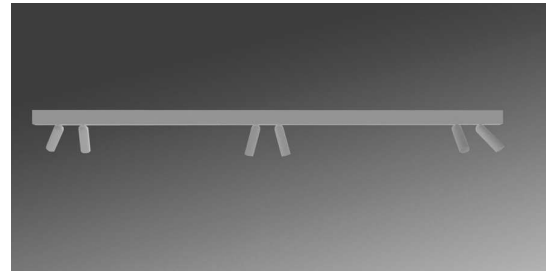
> [DRIVER](#)

Included, if dimmable: DALI, pushDIM

**PRODUCT DESCRIPTION**

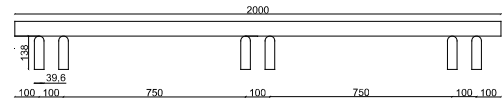
The PLK is a very small and elegant spot with multiple possibilities. The tube, with a diameter of about 40mm and a length of 138mm, is 359° rotatable and 80° inclinable. It is placed on a base with the driver included which makes it easy to install. There are several standard possibilities, specials are on request.

Aluminium luminaire.



**TECHNICAL DATA**

Application	surface
Dimensions	base: 2000 x 60 x 40mm
IP rating	IP20
Power	230V
Lifetime L70/F10/65°C	>60000h
MacAdam ellipse	3
Guarantee	5 year



Color Temperature	Wattage	Forward Current	Lumen (LED) (at tp = 65°C)	Lumen/Watt (LED) (at tp = 65°C)	CRI	Energy Label
2700K	6x8,3W	200mA	6x864 lm	121 lm/W	90+	E
3000K	6x8,3W	200mA	6x930 lm	130 lm/W	90+	E

**ORDER REFERENCE**

> LUMINAIRE

**! ORDER REFERENCE** + (1) **W** (white) / **B** (black) / **G** (gold) / **T** (titanium) / **BR** (bronze)  
 + (2) **DD** (for dimmable)

**2700K** ZUMI572241205 PLK BASE 2000/6 SLE G7 6x8,3W 6x864lm 2700K CRI90+ incl.driver  
**3000K** ZUMI572251205 PLK BASE 2000/6 SLE G7 6x8,3W 6x930lm 3000K CRI90+ incl.driver

> DRIVER

Included, if dimmable: DALI, pushDIM